



Kington Primary School  
Special Educational Needs and  
Disabilities  
Profile

October 2024

### General Overview of SEN across the school

The numbers below reflect the SEN needs across the school in October 2024.

The SEN register is constantly changing as new children arrive at school and others no longer need support.

	Number of children	% of whole school	National Jan 2024
Total on roll - including nursery	212		
All SEN	37	17.45%	n/a
SEN Support	32	15.09%	13.6%
EHCP	5	2.35%	4.8%
Pupils with Top Up Tariff	2	0.94%	n/a

### Breakdown of Specific Need

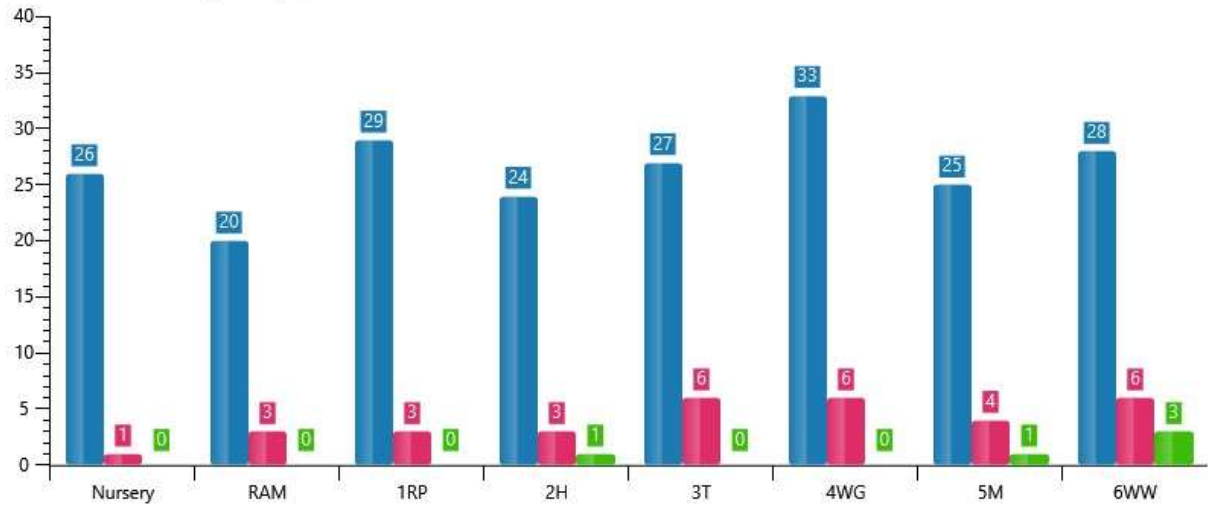
Several children have needs in one or more areas. The information presented indicates the child's primary needs only.

	Number of children	% of SEN children	% of whole school & rank	National Jan 24 Rank - all schools
Moderate Learning Difficulty	3	8.1%	1.41% 4th	5 <sup>rd</sup>
Speech, Language and Communication	8	21.62%	3.77% 3rd	1 <sup>st</sup>
Specific Learning Difficulty	11	29.72%	5.18% 1st	4 <sup>th</sup>
Social, Emotional & Mental Health	9	24.32%	4.24% 2nd	2 <sup>nd</sup>
Physical Disabilities (Motor inc DCD)	2	5.4%	0.94% 5th	7 <sup>th</sup>
ASD	0	0	0 7th	4 <sup>th</sup>
Other	2	5.4%	0.94% 5th	6 <sup>th</sup>
Vision	1	2.7%	0.47% 6th	8 <sup>th</sup>

## SEN Breakdowns (October 2024)

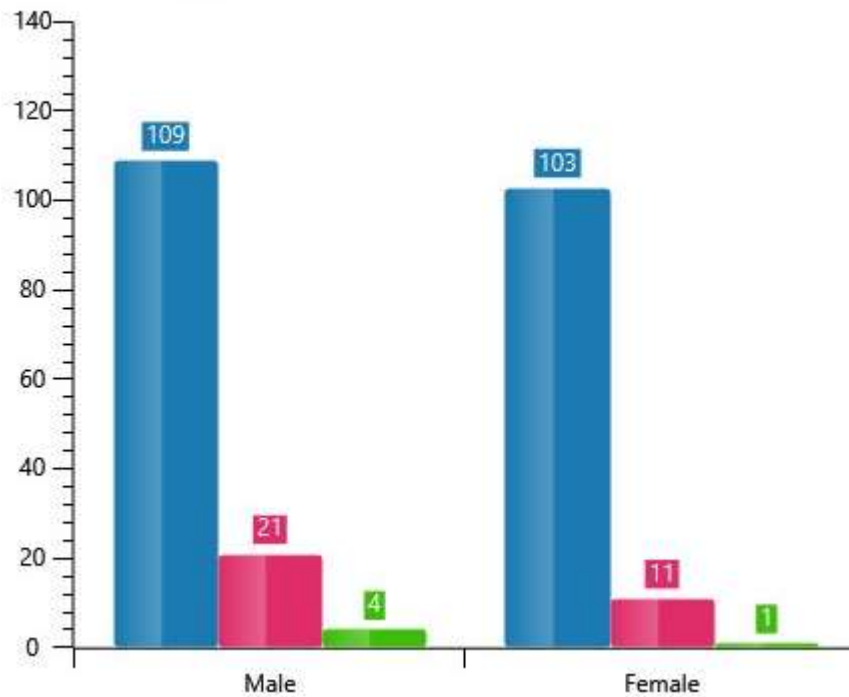
### Student Totals by Registration Group

A count of students in each registration group



### Student Total by Gender

A count of students by gender



Blue - school total   Pink - SEN support   Green - EHCP

School SEN support -	65.62% boys	34.37% girls
National SEN support-	62%	38%
School EHCP-	80% boys	20% girls
National EHCP -	72%	28%

	NO R	SEN Support	EHCP	SEN Boys	SEN Girls	% of SEN in Year group
Nursery 1	8	1	0	0	1	12.5%
Nursery 2	18	0	0	0	0	0%
Reception	20	3	0	3	2	15%
Year 1	29	3	0	2	1	10.3%
Year 2	24	3	1	3	1	16.6%
Year 3	27	6	0	3	3	22.2%
Year 4	33	6	1	5	2	21.21%
Year 5	25	4	2	3	3	24%
Year 6	28	6	1	6	1	25%

### Overview of Whole School Monitoring Arrangements

	No SEN	Target Children	SEN Support/ Top Up Tariff	EHCP
SIMs/Otrack				
Pupil Progress data				
SENCO monitoring				
Intervention Session Monitoring				
Provision Maps				
Personal Plans				
Outside Agency visits				

	All children are monitored in this way
	Some children are monitored in this way