

Kington Primary School  
Special Education and Disabilities  
Profile  
October 2023

### General Overview of SEN across the school

The numbers below reflect the SEN needs across the school in October 2023.

The SEN register is constantly changing as new children arrive at school and others no longer need support.

|                                   | Number of children | % of whole school | National 2022/23 | Herefordshire 2022/23 |
|-----------------------------------|--------------------|-------------------|------------------|-----------------------|
| Total on roll - including nursery | 218                |                   |                  |                       |
| All SEN                           | 37                 | 16.9%             | n/a              |                       |
| SEN Support                       | 32                 | 14.6%             | 13%              |                       |
| EHCP                              | 5                  | 2.2%              | 4.3%             |                       |
| Pupils with Top Up Tariff         | 2                  | 0.91%             | n/a              |                       |

### Breakdown of Specific Need

Several children have needs in one or more areas. The information presented indicates the child's primary needs only.

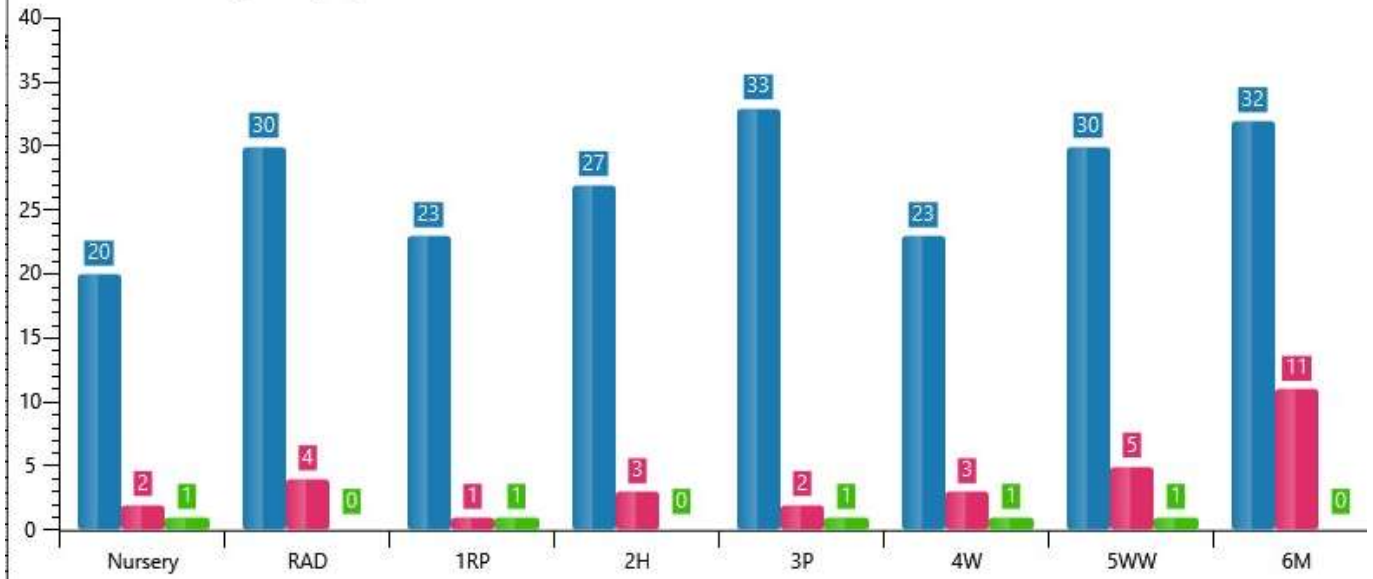
|                                       | Number of children | % of SEN children | % of whole school & rank | Herefordshire Primary schools | National 2022/23 Rank - all schools |
|---------------------------------------|--------------------|-------------------|--------------------------|-------------------------------|-------------------------------------|
| Moderate Learning Difficulty          | 3                  | 8.1%              | 1.37%<br>3rd             |                               | 3 <sup>rd</sup>                     |
| Speech, Language and Communication    | 9                  | 24.32%            | 4.12%<br>1st             |                               | 1 <sup>st</sup>                     |
| Specific Learning Difficulty          | 8                  | 21.62%            | 3.66%<br>2nd             |                               | 4 <sup>th</sup>                     |
| Social, Emotional & Mental Health     | 9                  | 24.32%            | 4.12%<br>1st             |                               | 2 <sup>nd</sup>                     |
| Physical Disabilities (Motor inc DCD) | 3                  | 8.1%              | 1.37%<br>3rd             |                               | 6 <sup>th</sup>                     |
| ASD                                   | 1                  | 2.7%              | 0.45%<br>5th             |                               | 5 <sup>th</sup>                     |
| Other                                 | 3                  | 8.1%              | 1.37%<br>4th             |                               | 7 <sup>th</sup>                     |

|        |   |      |       |     |     |
|--------|---|------|-------|-----|-----|
| Vision | 1 | 2.7% | 0.45% | 5th | 8th |
|--------|---|------|-------|-----|-----|

### SEN Breakdowns (October 2023)

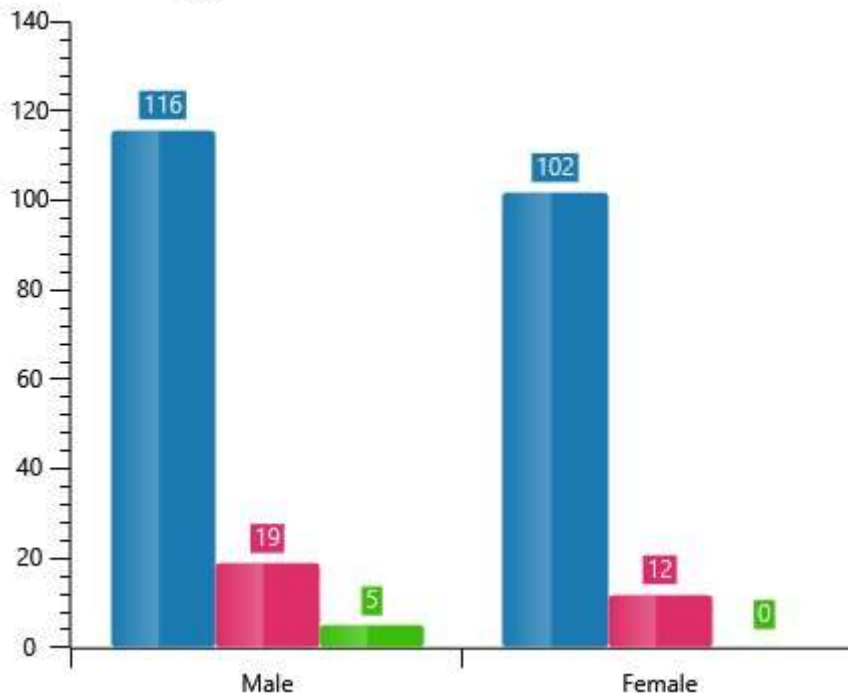
Student Totals by Registration Group

A count of students in each registration group



Student Total by Gender

A count of students by gender



Blue - school total Pink - SEN support Green - EHCP

|                       |            |             |
|-----------------------|------------|-------------|
| School SEN support -  | 59.3% boys | 37.5% girls |
| National SEN support- | 62.8%      | 37.2%       |
| School EHCP-          | 100% boys  | 0% girls    |
| National EHCP -       | 72.4%      | 27.6%       |

|           | NO<br>R | SEN<br>Support | EHCP | SEN<br>Boys | SEN<br>Girls | % of<br>SEN in<br>Year<br>group |
|-----------|---------|----------------|------|-------------|--------------|---------------------------------|
| Nursery 1 | 6       | 0              | 0    | 0           | 0            | 0                               |
| Nursery 2 | 14      | 2              | 1    | 3           | 0            | 21.4%                           |
| Reception | 30      | 4              | 0    | 2           | 2            | 13.3%                           |
| Year 1    | 23      | 2              | 0    | 1           | 1            | 8.69%                           |
| Year 2    | 26      | 2              | 0    | 1           | 1            | 7.69%                           |
| Year 3    | 34      | 3              | 1    | 3           | 1            | 11.7%                           |
| Year 4    | 23      | 3              | 1    | 3           | 1            | 17.39%                          |
| Year 5    | 30      | 5              | 1    | 3           | 3            | 20%                             |
| Year 6    | 32      | 11             | 0    | 7           | 4            | 34.37%                          |

## Overview of Whole School Monitoring Arrangements

|                                 | No SEN | Target Children | SEN Support/<br>Top Up<br>Tariff | EHCP |
|---------------------------------|--------|-----------------|----------------------------------|------|
| SIMs/Otrack                     |        |                 |                                  |      |
| Pupil Progress data             |        |                 |                                  |      |
| SENCO monitoring                |        |                 |                                  |      |
| Intervention Session Monitoring |        |                 |                                  |      |
| Provision Maps                  |        |                 |                                  |      |
| Personal Plans                  |        |                 |                                  |      |
| Outside Agency visits           |        |                 |                                  |      |

|  |   |
|--|---|
|  | All children are monitored in this way  |
|  | Some children are monitored in this way |